

Scars / Invaginations

Example 1



Example 2

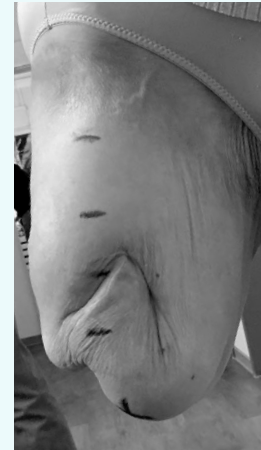


Example 3



With Your® Liner

Limb



3D model



Your® Liner



Indication

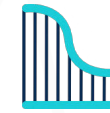
Residual limb exhibits scars and / or invaginations



Key features



Anatomically tailored



Adjustable thicknesses

Typical issues

Air pocket between liner and skin

A standard liner can offer a poor fit with the shape of the scar, and some air can get trapped between the stump and the liner, upon donning the liner. This can lead to issues such as excessive sweating and friction between skin and liner.



Scar filling

The possibility of locally applying adequate thicknesses allows to apply a filling in front of the scar, limiting the risk of air getting trapped between the stump and the liner, and subsequent risks of excessive sweating and friction between skin and liner.

How can Your® Liner help ?

