

Conical limb / bony distal end

Example 1



Example 2

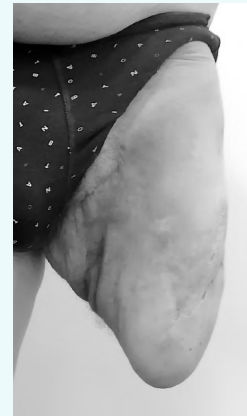


Example 3



With Your® Liner

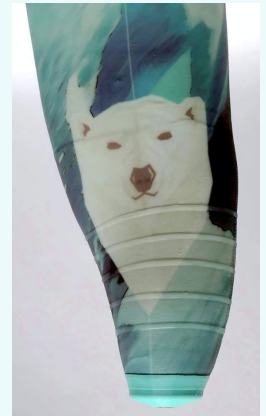
Limb



3D model



Your® Liner



Indication

Residual limb exhibits a conical shape. The circumference of the distal segment is substantially smaller than the one of the upper segment of the residual limb. Femoral distal extremity is not covered by sufficient soft tissue / is surfacing under the skin.



Key features



Anatomically tailored



Adapted compressions

Typical issues

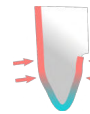
Off-the-shelf liner is too loose on distal end

An off-the-shelf liner fitting on the proximal segment of the stump can be too loose on the distal segment. Under such conditions, air pockets can appear between skin and liner, leading to a risk of friction-induced skin breakdown, excessive sweating, etc.



Off-the-shelf liner is too tight on upper section of residual limb

An off-the-shelf liner fitting on the distal end of the stump can be too tight on the proximal segment of the stump. Proximal edge of the liner might also roll down by itself



Insufficient cushioning on femoral extremity

An off-the-shelf liner might not provide a sufficient cushioning layer on the femoral extremity, exposing it to pressure peaks which can lead to pressure sores and skin injuries.



Adapted shape and compressions

With its custom shape and adapted compressions, Your® Liner provides a close fit and adequate compressions all over the limb, eliminating the issue of too-high or too-low compressions, and of air pockets between the liner and the stump.



Thicker distal cushion

The possibility of locally applying adequate cushioning allows to apply adequate elastomer thickness to limit the risk of pressure peaks appearing on the femoral extremity.



How can Your® Liner help ?

